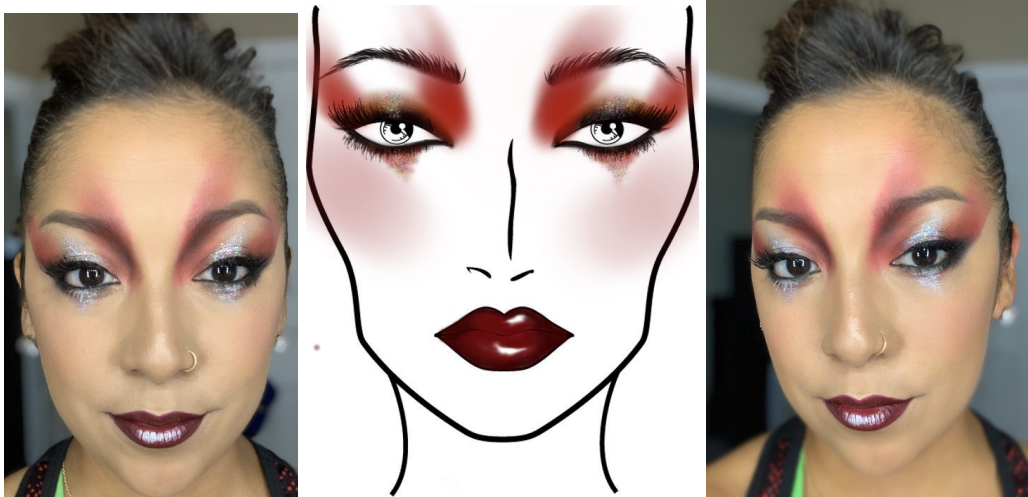


## Stoneman Douglas Color guard 2019 Makeup Shopping List:



*Most items on this list you may have in your personal makeup arsenal like eyeliner and mascara, and foundations. I will list everything I used to create this look and you may adjust depending if you find/own something similar. (e.g. similar eyeshadow colors you might already own doesn't have to be exact to what I listed here, if you have something similar that gives the same effect, use it)*

*Items on this list you will find for purchase at:*

*-CVS and similar drug stores, Amazon, ULTA, NYX Cosmetics, Morphe*

*Also, once you receive the video tutorial, it should explain things further and answer any additional questions you may have as to why I use certain products and techniques.*

### **Eyes:**

-Black Waterproof Mascara

-Glitter primer: "NYX glitter primer"

[https://www.nyxcosmetics.com/tools-%26-extras/glitter/glitter-primer/NYX\\_305.html](https://www.nyxcosmetics.com/tools-%26-extras/glitter/glitter-primer/NYX_305.html)

-Lash glue

-Lashes: "Ardell Wispies" (can also buy these at any drug store)

[https://www.amazon.com/Ardell-Multipack-Wispies-Lashes-Pound/dp/B014MEFHNY/ref=sr\\_1\\_4?fpw=fresh&keywords=lashes+ardell+wispies&qid=1567538670&s=gateway&sr=8-4](https://www.amazon.com/Ardell-Multipack-Wispies-Lashes-Pound/dp/B014MEFHNY/ref=sr_1_4?fpw=fresh&keywords=lashes+ardell+wispies&qid=1567538670&s=gateway&sr=8-4)

-Black pencil stick eyeliner: Nyx Jumbo pencil in black: Or any other black eyeliner pencil for waterline

[https://www.amazon.com/NYX-PROFESSIONAL-MAKEUP-Jumbo-Pencil/dp/B001TJXI5U/ref=sr\\_1\\_3?crd=1L7QJ6DNULV86&keywords=nyx%2Bjumbo%2Bpencil%2Bblack&qid=1557165476&s=gateway&sprefix=nyx%2Bjumbo%2Bpencil%2Bbl%2Caps%2C136&sr=8-3&th=1](https://www.amazon.com/NYX-PROFESSIONAL-MAKEUP-Jumbo-Pencil/dp/B001TJXI5U/ref=sr_1_3?crd=1L7QJ6DNULV86&keywords=nyx%2Bjumbo%2Bpencil%2Bblack&qid=1557165476&s=gateway&sprefix=nyx%2Bjumbo%2Bpencil%2Bbl%2Caps%2C136&sr=8-3&th=1)

-Black eyeliner: (To line top lashline. Can use the pencil with this as well but if you feel you need a separate eyeliner to make the top line perfect, then get any liquid or gel liner you are comfortable with)

-Silver Shadow: Mehron Metallic powder in Silver

[https://www.amazon.com/Mehron-Makeup-Metallic-Powder-Silver/dp/B0091K993O/ref=sr\\_1\\_3?keywords=mehron%2BSilver%2BShadow&qid=1558363713&s=gateway&sr=8-3&th=1](https://www.amazon.com/Mehron-Makeup-Metallic-Powder-Silver/dp/B0091K993O/ref=sr_1_3?keywords=mehron%2BSilver%2BShadow&qid=1558363713&s=gateway&sr=8-3&th=1)

-Red eyeshadow: "Bloody Mary Eyeshadow"

[https://www.amazon.com/Bloody-Mary-Eye-Shadow-Red/dp/B00KS1VK96/ref=pd\\_sim\\_121\\_4/138-8760981-6061439?\\_encoding=UTF8&pd\\_rd\\_i=B00KS1VK96&pd\\_rd\\_r=8ccda671-1a48-4248-b561-1a58014910f6&pd\\_rd\\_w=buU9&pd\\_rd\\_wg=3XX5D&pf\\_rd\\_p=5c130f77-a5ef-4ffd-9db1-c29a354f52f9&pf\\_rd\\_r=GV4HTTJ0JKPR9C8R4RYF&psc=1&refRID=GV4HTTJ0JKPR9C8R4RYF](https://www.amazon.com/Bloody-Mary-Eye-Shadow-Red/dp/B00KS1VK96/ref=pd_sim_121_4/138-8760981-6061439?_encoding=UTF8&pd_rd_i=B00KS1VK96&pd_rd_r=8ccda671-1a48-4248-b561-1a58014910f6&pd_rd_w=buU9&pd_rd_wg=3XX5D&pf_rd_p=5c130f77-a5ef-4ffd-9db1-c29a354f52f9&pf_rd_r=GV4HTTJ0JKPR9C8R4RYF&psc=1&refRID=GV4HTTJ0JKPR9C8R4RYF)

-Black Eyeshadow: any matte black eyeshadow will work

-Brown eyeshadow: Morphe single shadow in "Deep cocoa" <https://www.morphe.com/products/es24-deep-cocoa>

-Holographic glitter (can use the one I've linked here on amazon, but if you find one similar at local craft or drug store, that works too)

[https://www.amazon.com/Hemway-Holographic-Decoration-Weddings-Cosmetic/dp/B0721YDYQX/ref=sxin\\_3\\_ac\\_d\\_pm?ac\\_md=3-1-QmV0d2VlbiAkMTAgYW5kICQxNQ%3D%3D-ac\\_d\\_pm&crid=2OF1GPS1VL2J9&keyword=s=iridescent+glitter+fine&pd\\_rd\\_i=B0721YDYQX&pd\\_rd\\_r=9383f065-26d7-45e9-8cd0-25a12fee70ae&pd\\_rd\\_w=B6LJa&pd\\_rd\\_wg=APN9i&pf\\_rd\\_p=aed08533-d0f3-456a-bfcd-3ec60fc417c9&pf\\_rd\\_r=6MWCZTA02XMVQRZFXQYK&psc=1&qid=1567538177&s=gateway&sprefix=irides%2Caps%2C156](https://www.amazon.com/Hemway-Holographic-Decoration-Weddings-Cosmetic/dp/B0721YDYQX/ref=sxin_3_ac_d_pm?ac_md=3-1-QmV0d2VlbiAkMTAgYW5kICQxNQ%3D%3D-ac_d_pm&crid=2OF1GPS1VL2J9&keyword=s=iridescent+glitter+fine&pd_rd_i=B0721YDYQX&pd_rd_r=9383f065-26d7-45e9-8cd0-25a12fee70ae&pd_rd_w=B6LJa&pd_rd_wg=APN9i&pf_rd_p=aed08533-d0f3-456a-bfcd-3ec60fc417c9&pf_rd_r=6MWCZTA02XMVQRZFXQYK&psc=1&qid=1567538177&s=gateway&sprefix=irides%2Caps%2C156)

-Brow Pencils or powder (to fill in and shape brows): Any brand works

### **Face:**

-Foundation: Own personal foundation. A drugstore favorite is Maybelline FIT foundation.

-Highlight: Shimmer color to highlight the top of your cheek. Any brand works

-Translucent powder: Any brand will work

-Bronzer. I use this for a light contouring

-Blush: (any rosy/coral blush will work)

-Painters Tape (to make for easier and even application for the red and black eyeshadow)

-Makeup Sealer: These are the ones I love the most: Can choose one or the other

-Final Seal ben nye:

[https://www.amazon.com/Final-Seal-Matte-Makeup-Sealer/dp/B005MZ4A7C/ref=sr\\_1\\_2?keywords=face+sealer&qid=1557168555&s=beauty&sr=1-2](https://www.amazon.com/Final-Seal-Matte-Makeup-Sealer/dp/B005MZ4A7C/ref=sr_1_2?keywords=face+sealer&qid=1557168555&s=beauty&sr=1-2)

-Dermacolor fixer spray:

[https://www.amazon.com/Kryolan-72290-Dermacolor-Fixing-Spray/dp/B00AYORQVS/ref=sr\\_1\\_3?crid=30W7O9L3MC4PU&keywords=dermacolor&qid=1557168655&s=beauty&sprefix=Dermacolo%2Cbeauty%2C139&sr=1-3](https://www.amazon.com/Kryolan-72290-Dermacolor-Fixing-Spray/dp/B00AYORQVS/ref=sr_1_3?crid=30W7O9L3MC4PU&keywords=dermacolor&qid=1557168655&s=beauty&sprefix=Dermacolo%2Cbeauty%2C139&sr=1-3)

### **Lips:**

-Burgundy lipstick :

Maybelline Matte ink lipstick in "Composer" :

[https://www.amazon.com/Maybelline-New-York-Superstay-Lipstick/dp/B07GX7ZG4S/ref=sr\\_1\\_fkmrnull\\_3?crid=BIRWQAS0VE60&keywords=maybelline%2Bsuperstay%2Bmatte%2Bink%2Bcomposer&qid=1557165818&s=gateway&sprefix=maybelline%2Bsuperstay%2Bmatte%2Bink%2Bcom%2Caps%2C142&sr=8-3-fkmrnull&th=1](https://www.amazon.com/Maybelline-New-York-Superstay-Lipstick/dp/B07GX7ZG4S/ref=sr_1_fkmrnull_3?crid=BIRWQAS0VE60&keywords=maybelline%2Bsuperstay%2Bmatte%2Bink%2Bcomposer&qid=1557165818&s=gateway&sprefix=maybelline%2Bsuperstay%2Bmatte%2Bink%2Bcom%2Caps%2C142&sr=8-3-fkmrnull&th=1)

### **Brushes:**

(more details will be shown in video since there are many brushes that can be used and purchased)

- small Fluffy eye brush (to blend eyeshadows together)
- fluffy powder brush ( to set face makeup with translucent powder and also apply blush)
- flat synthetic brush (pack on pigment to eyelid)
- small smudge brush (smudging the shadow under the eye)
- angle brush for details and brows (to fill in brows and set eyeliner)
- Medium fluffy brush to apply red shadow to face

Should you have any questions, do not hesitate to reach out and ask at:

[info@carolinemongeartistry.com](mailto:info@carolinemongeartistry.com)

I will do my best to answer any questions you may have and make the process much easier for you. The video tutorial will clarify a lot, but feel free to ask!

**Thanks and happy painting!**